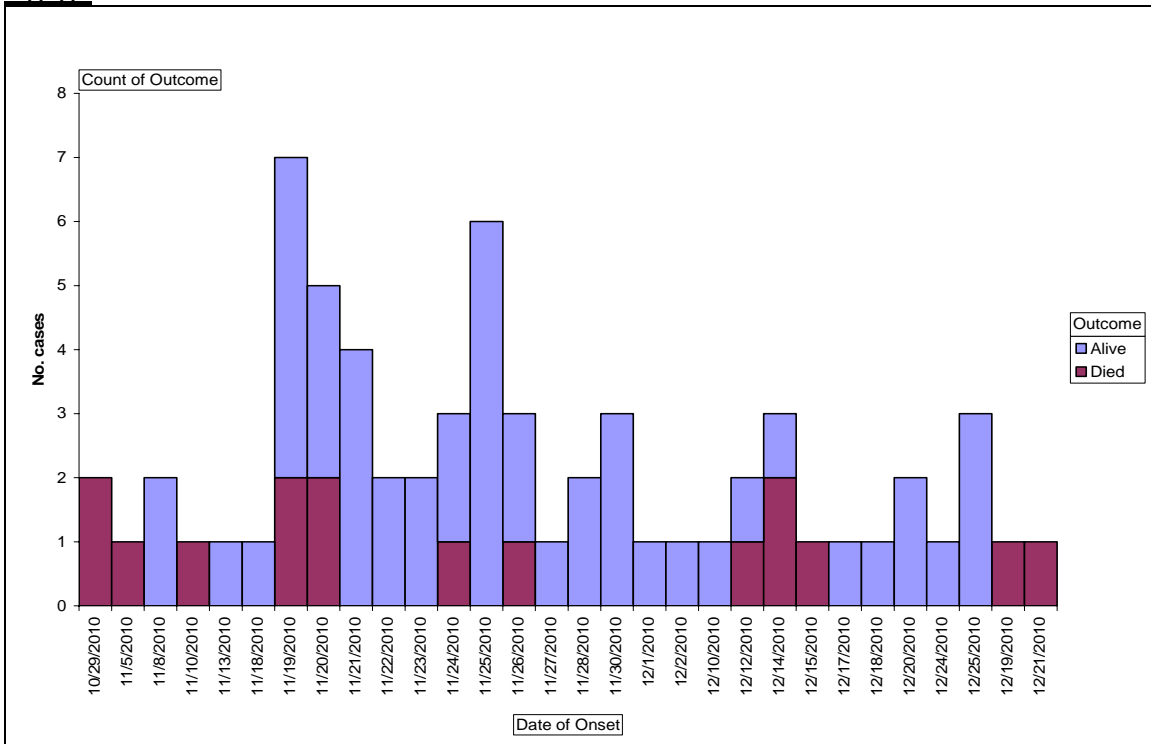


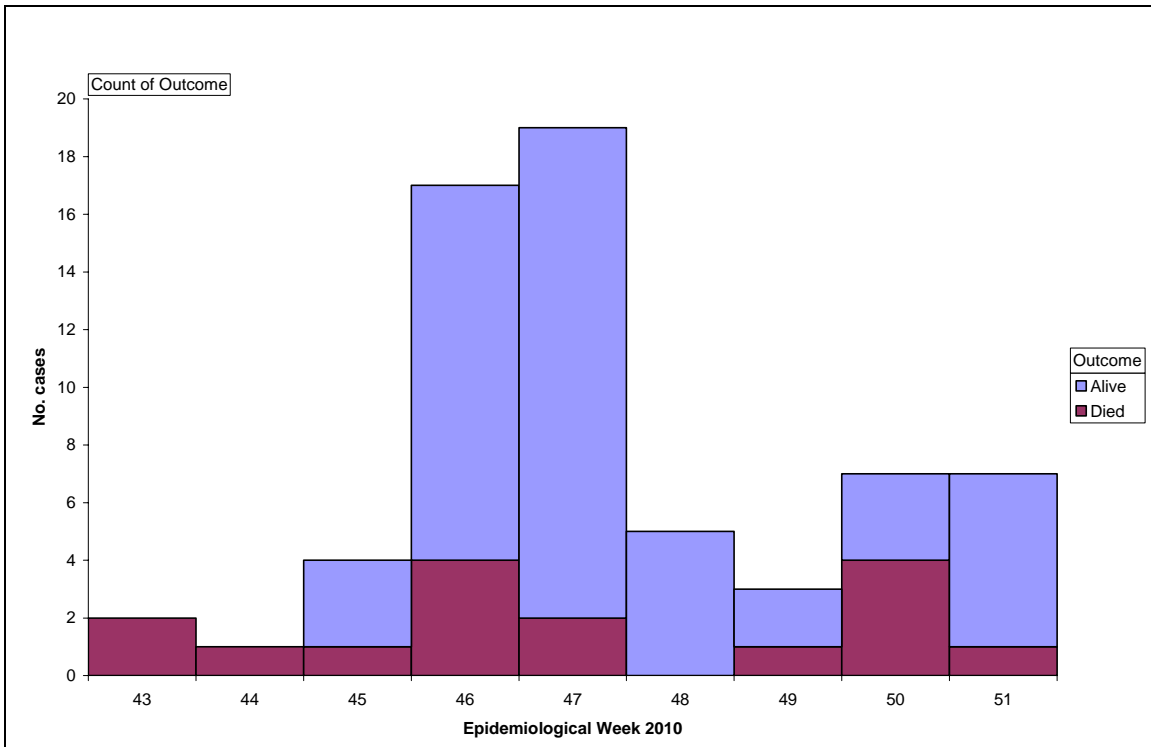
**Epidemiological Description Yellow Fever Outbreak January 4, 2011**

**Epidemic curve,**

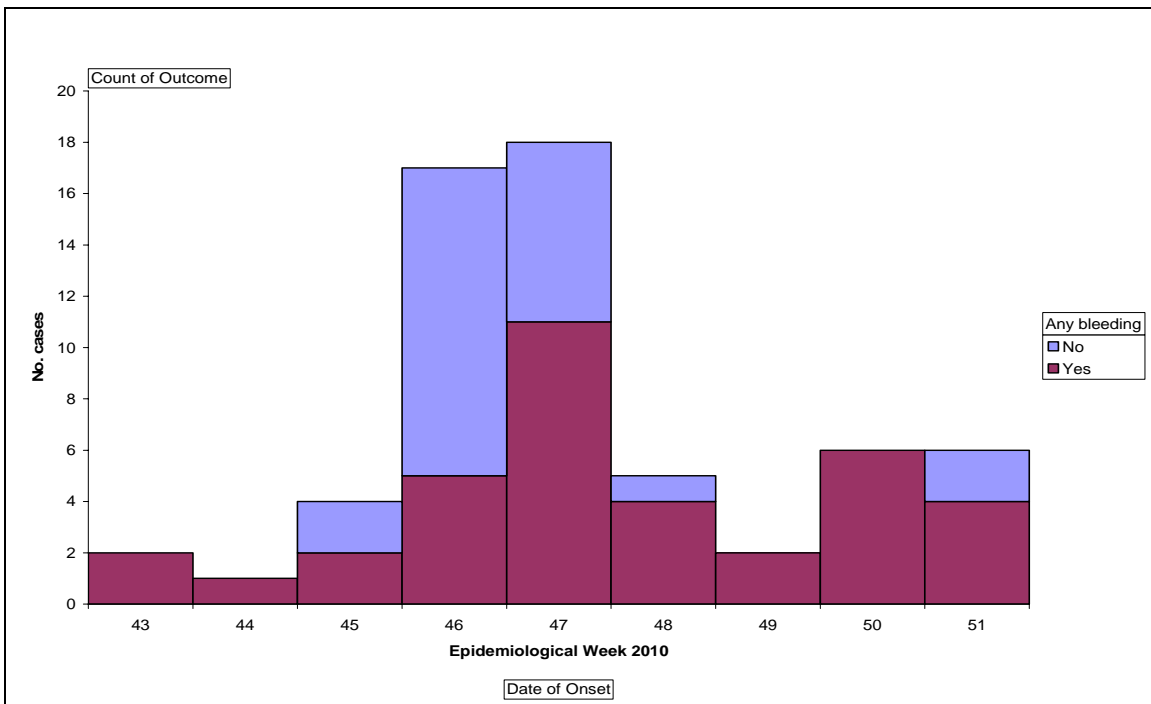
**Agago**



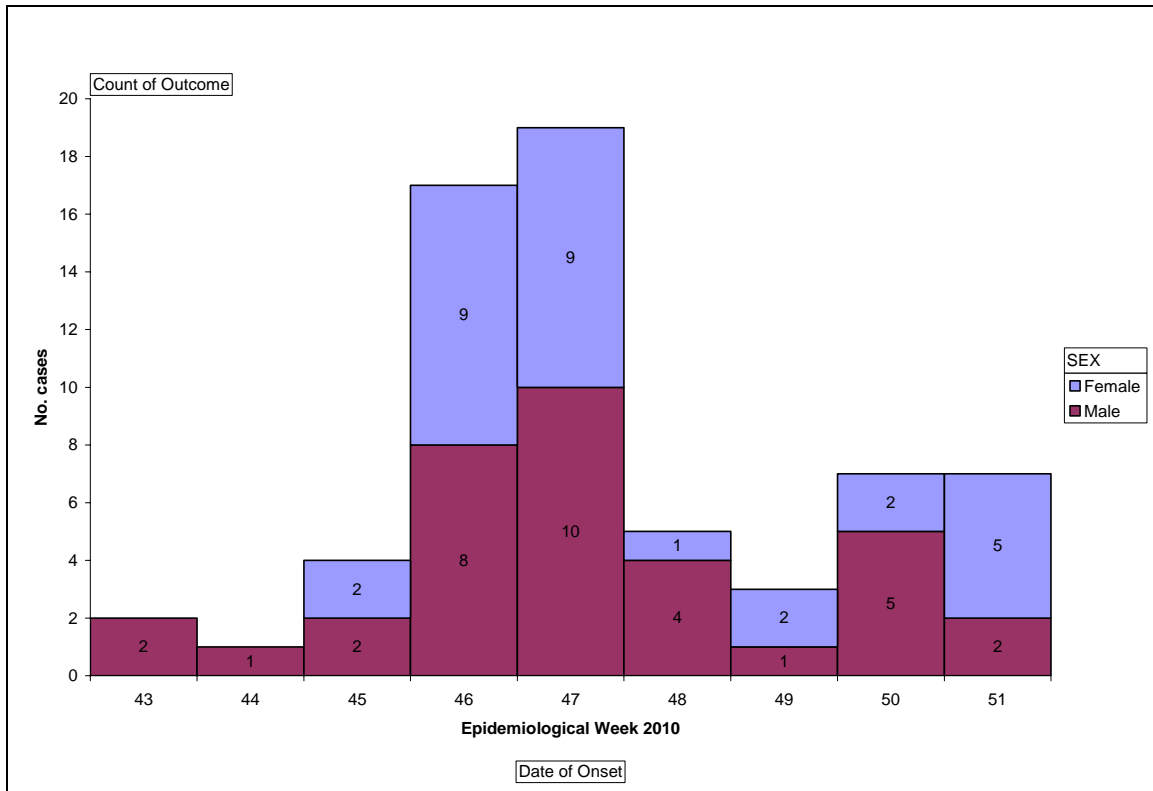
Initial cases in Agago were reported towards the end of October. The isolation ward and ambulance services were established 17-11-2010 (almost coinciding with the first peak). Subsequent peaks are five to 10 days apart.



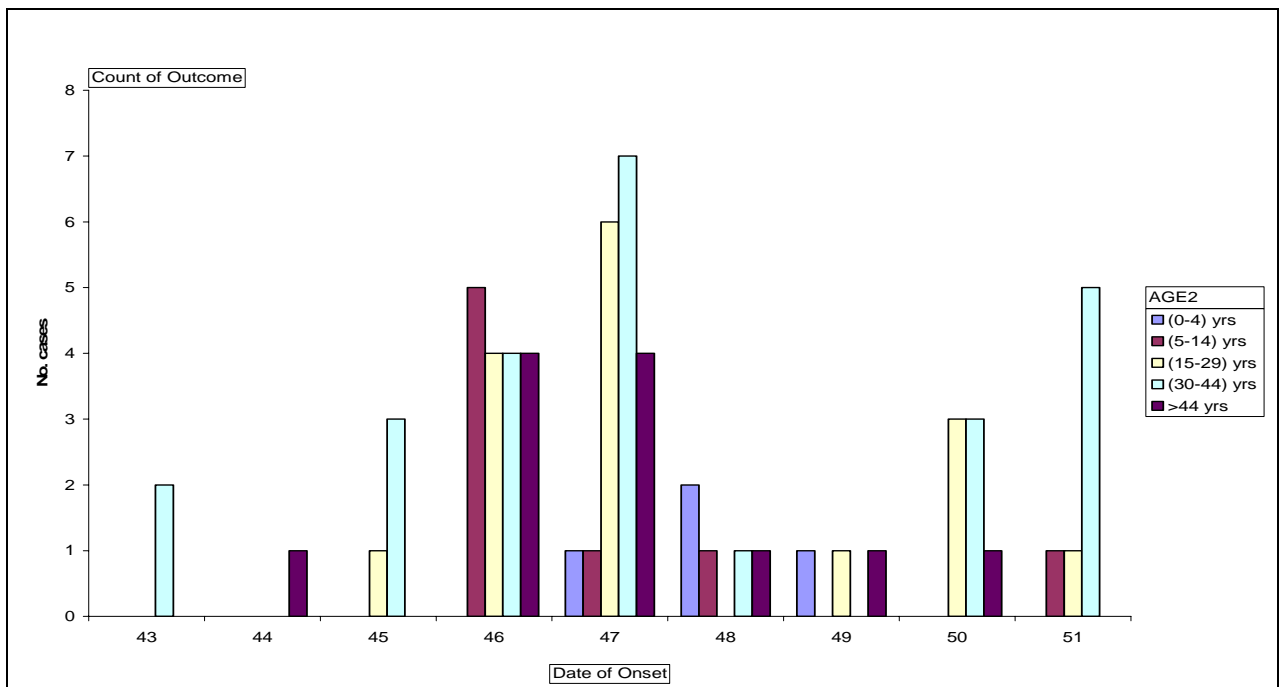
Epi-curve by week shows progressively higher number of cases reported after week 43 reaching the highest peak of 19 cases in week 47.



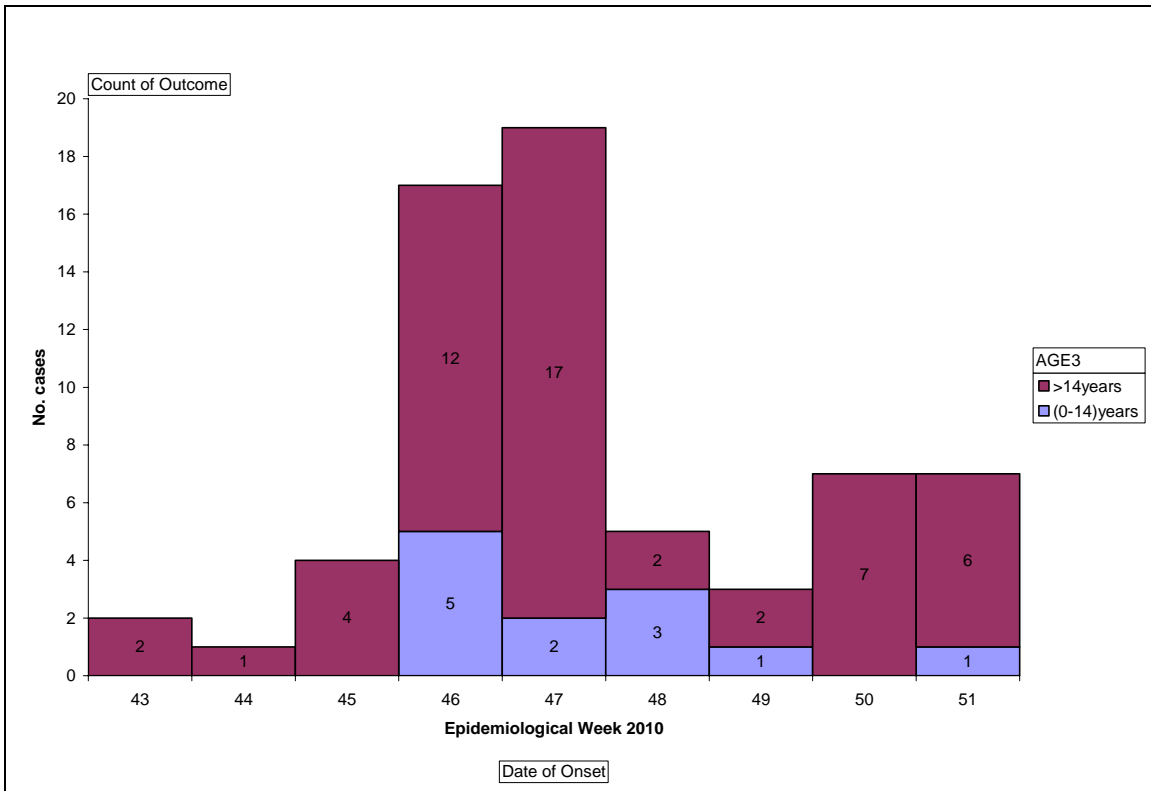
A significant proportion of patients presented with some form of bleeding for most of the weeks except in week 46.



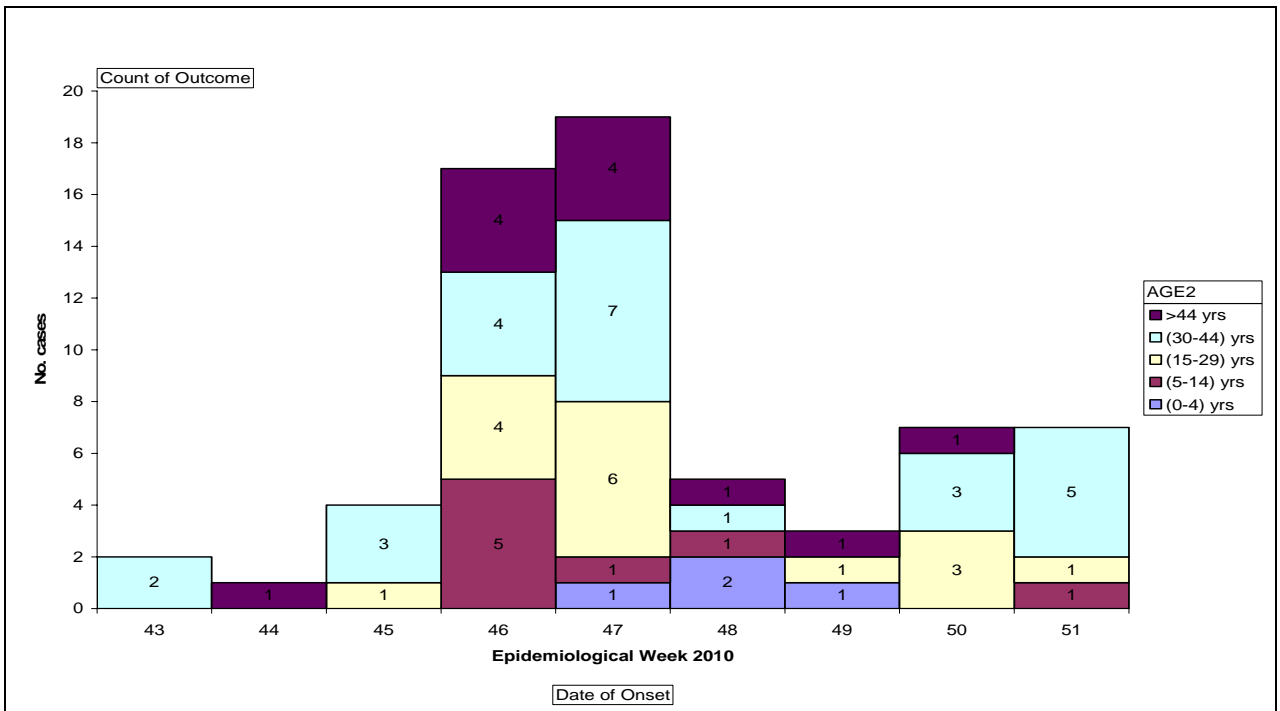
The earliest patients at the onset of the outbreak were males; however from week 45 the two groups were almost evenly affected.



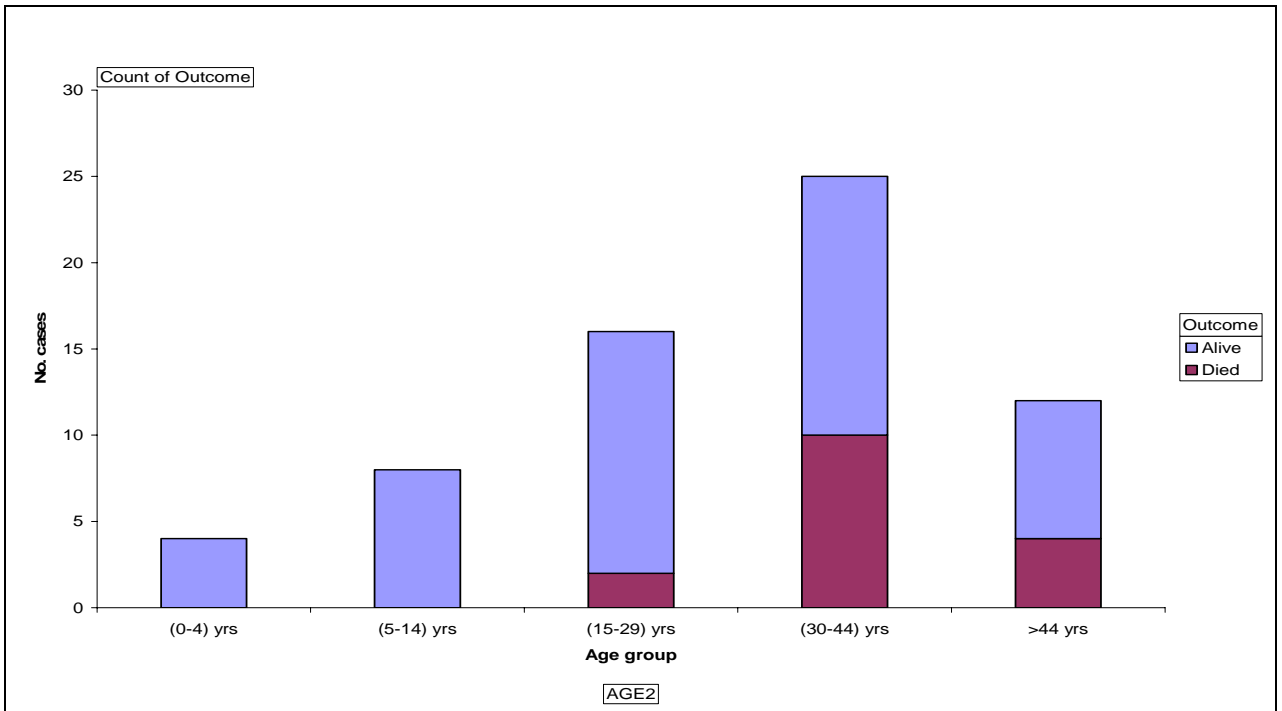
During the first three weeks after the onset of the outbreak, all cases were 30 years and above. However after week 46, children were increasingly affected after week 46.



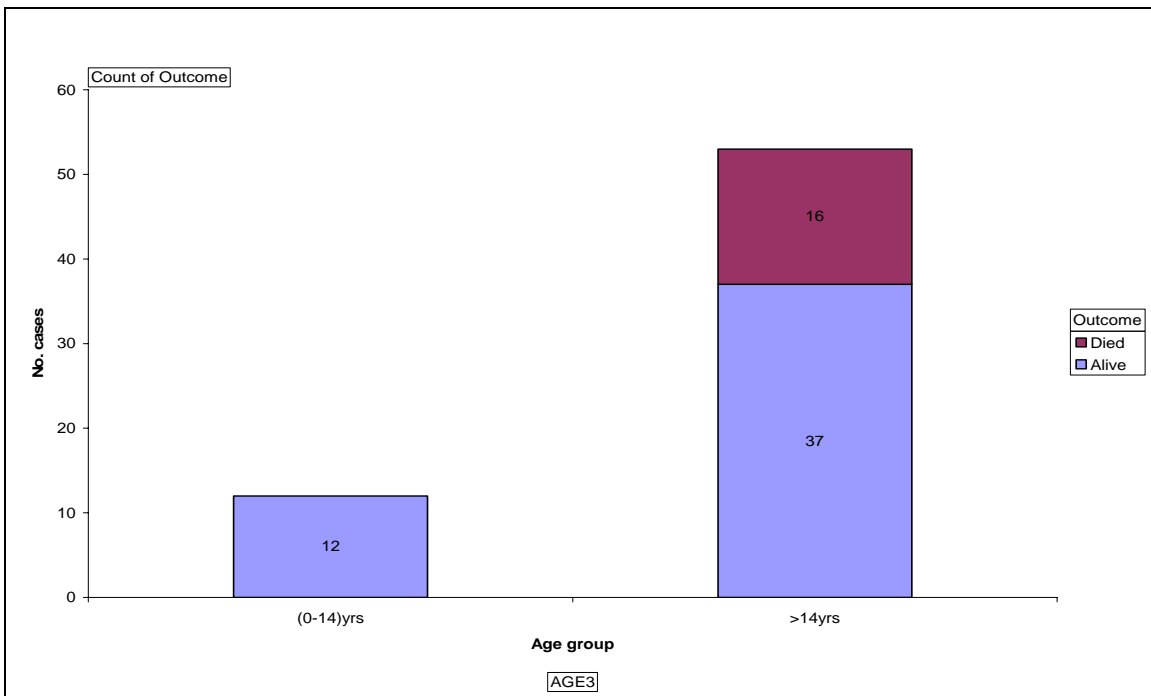
Most of the cases were >14 years for all the weeks during the outbreak.



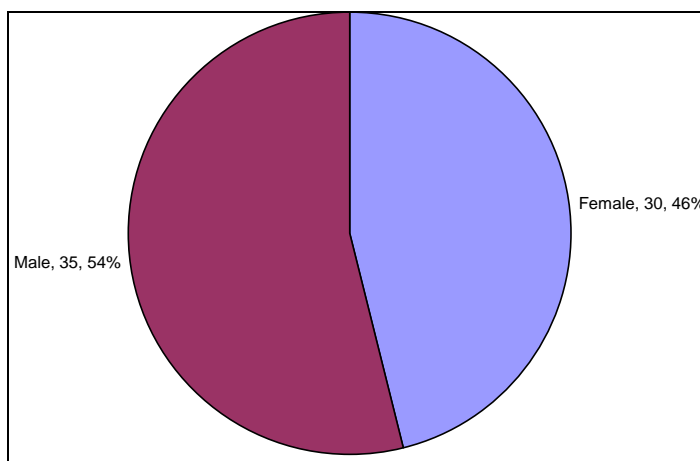
During the first three weeks after the onset of the outbreak, all cases were 30 years and above. However after week 46, children were increasingly affected after week 46.



Most of the cases were aged 15-44 years/



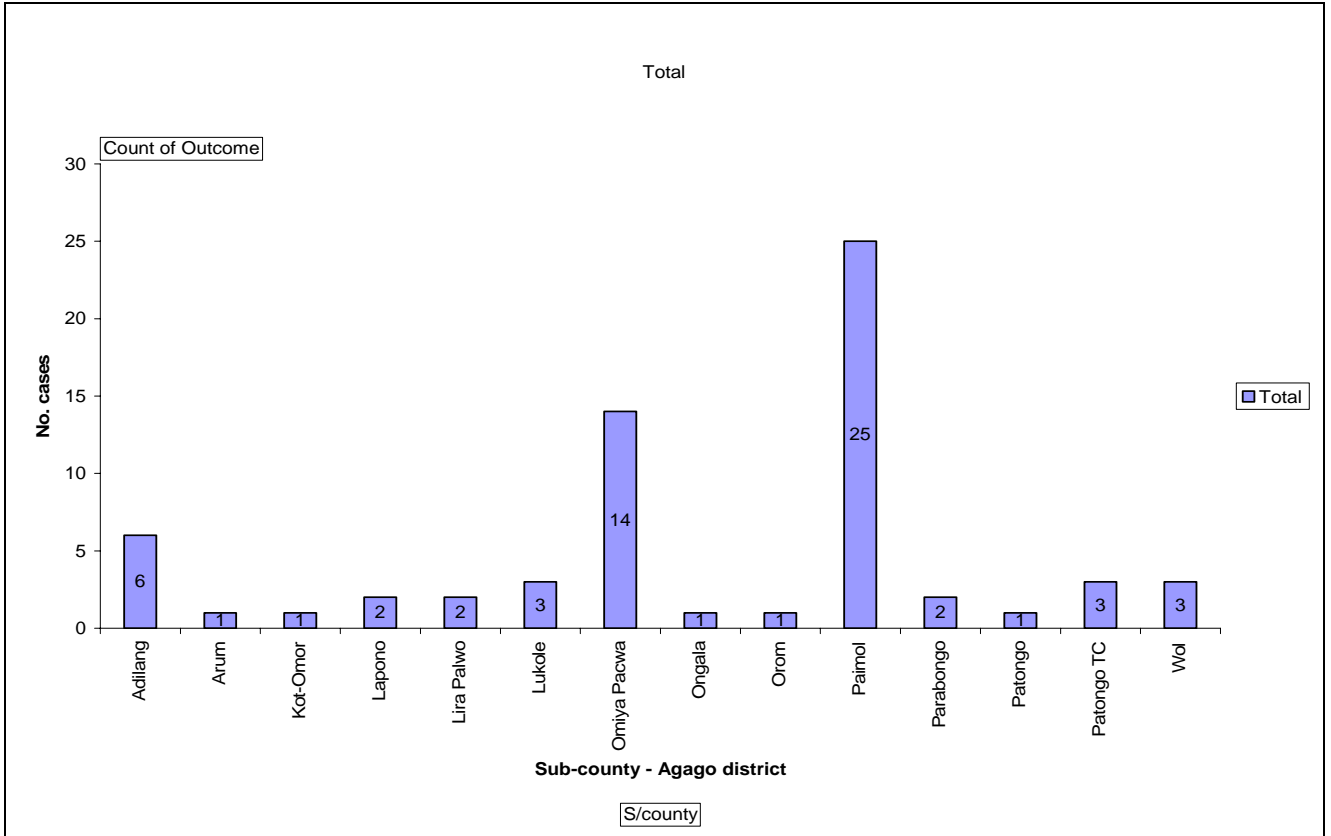
Most of the cases were >14 years.



There were more cases among the males than females.

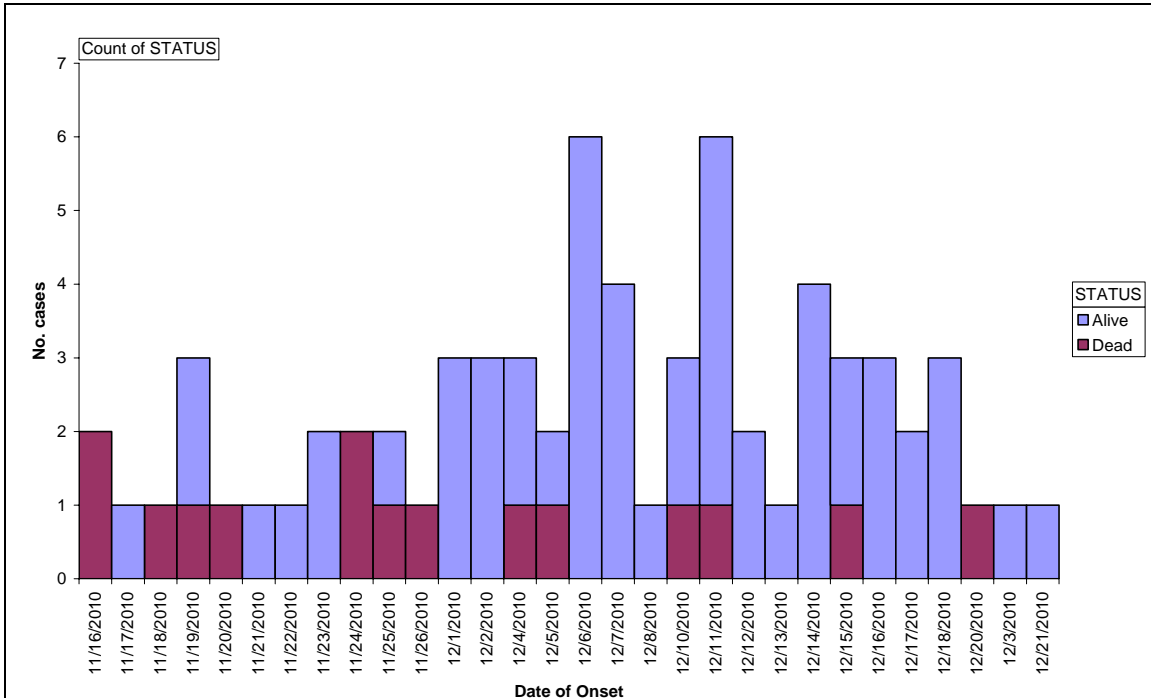
<b>Agago (N=65)</b>	<b>Frequency (%)</b>
Headache	48 (77.4)
Fever	39 (62.9)
Any bleeding	37 (60.7)
Vomiting	36 (58.1)
Abdominal pain	35 (56.5)
Convulsions	4 (6.5)
Vomiting blood	28 (45.2)
Bloody diarrhoea	20 (32.3)
Body weakness	13 (21)
Dizziness	12 (19.4)
Nose bleeding	10 (16.1)
Chest pain	6 (9.7)
Convulsions	4 (6.5)
Hiccups	1 (1.6)
Other bleeding	1 (1.6)

Most prevalent symptoms among the cases were head ache; fever; any form of bleeding; vomiting and abdominal pain.

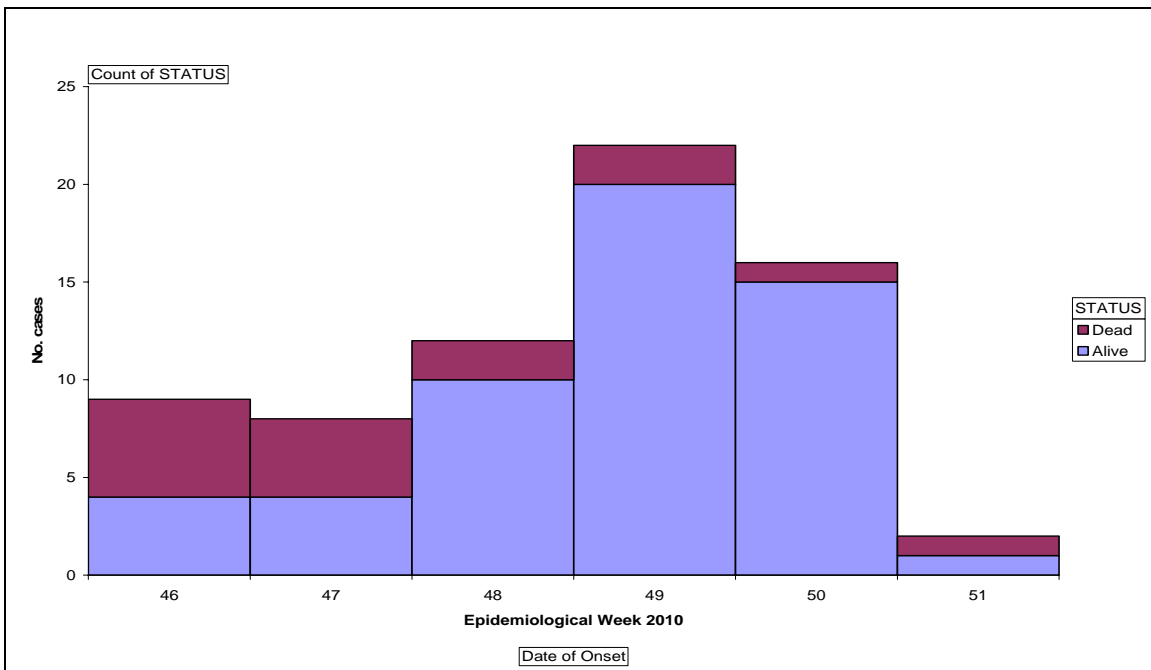


Most of the cases are clustered in Paimol and Omiya Pachwa sub-counties in Agago district.

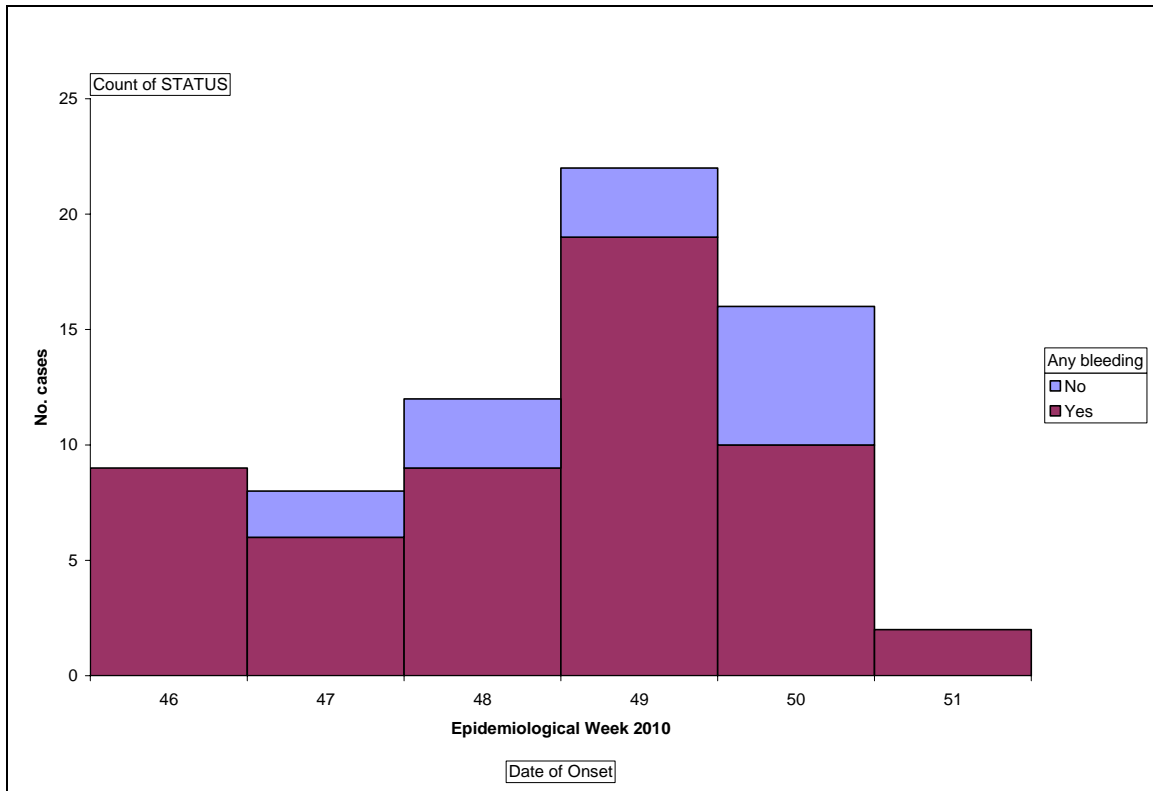
**Kitgum**  
**Epidemic curve**



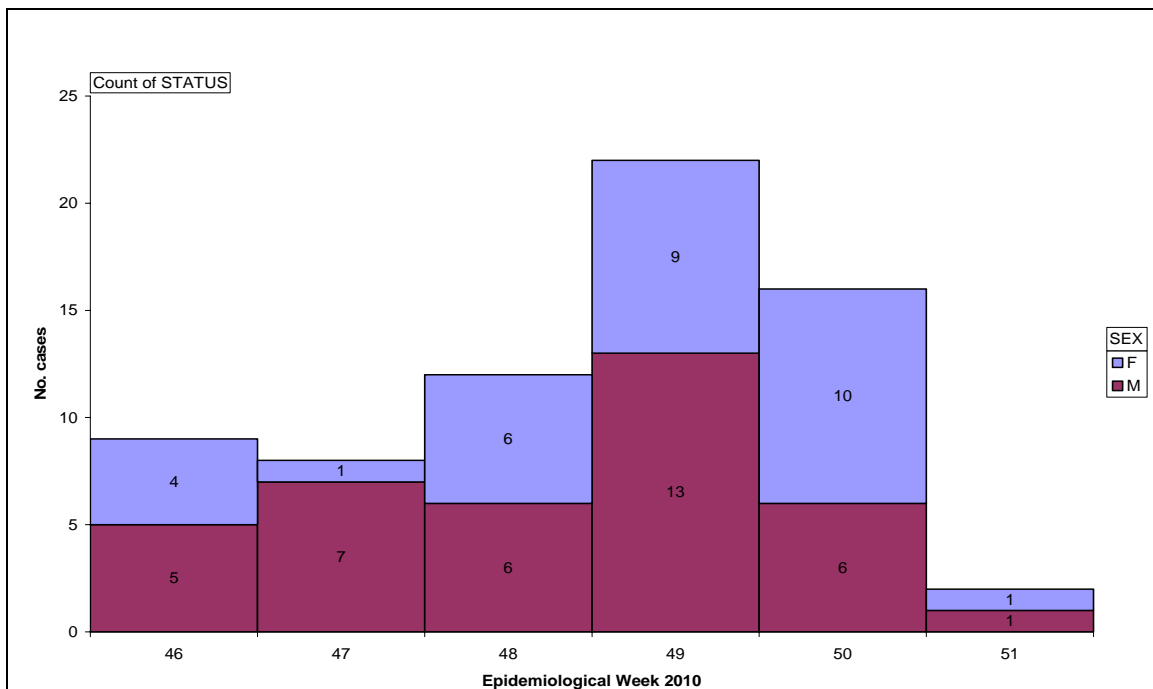
Epi-curve is typical of a propagated outbreak with successive peaks separated by intervals of four to 14 days.



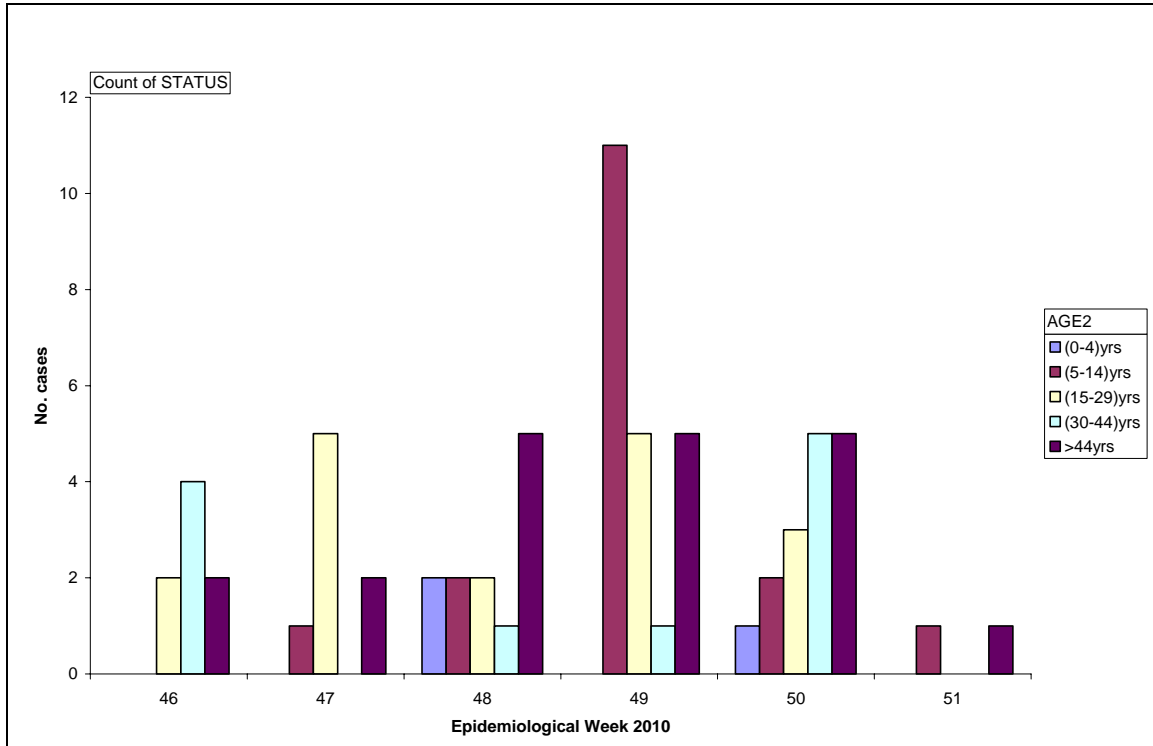
Highest peak reached in week 49 with the number of deaths reducing as the outbreak advanced.



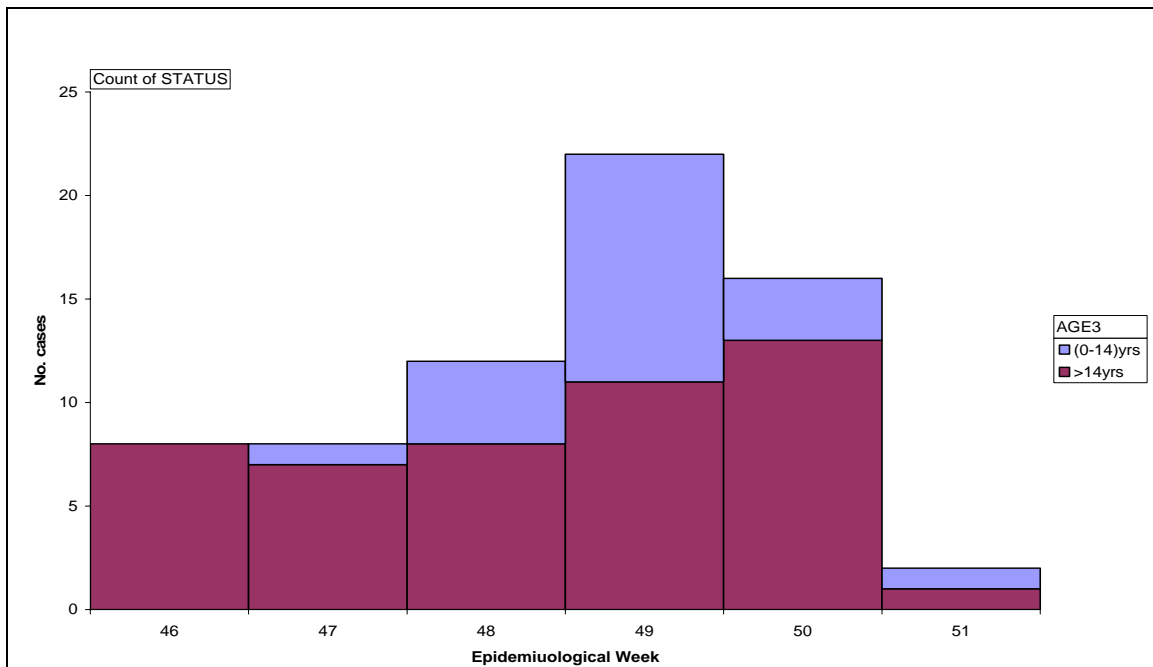
A significant proportion of patients presented with some form of bleeding in all the weeks during the outbreak.



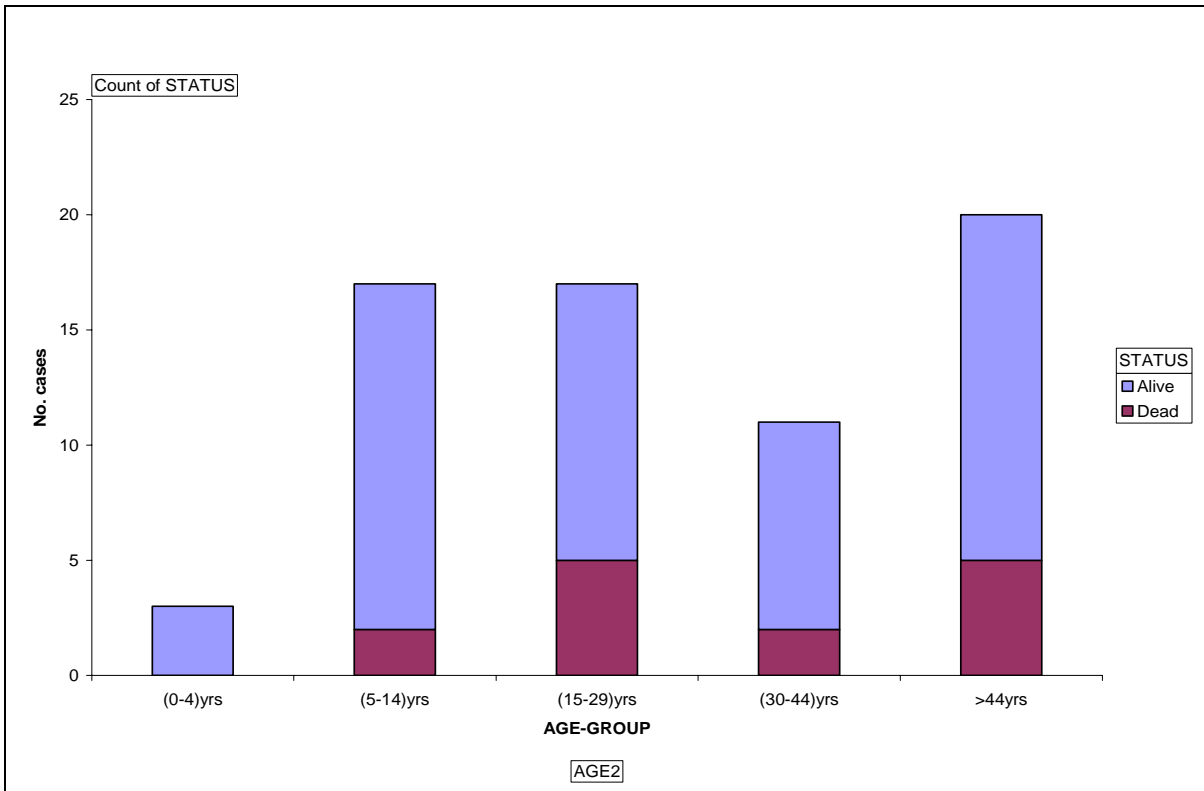
More males were identified among the males during the first two weeks and during week 49 of the outbreak



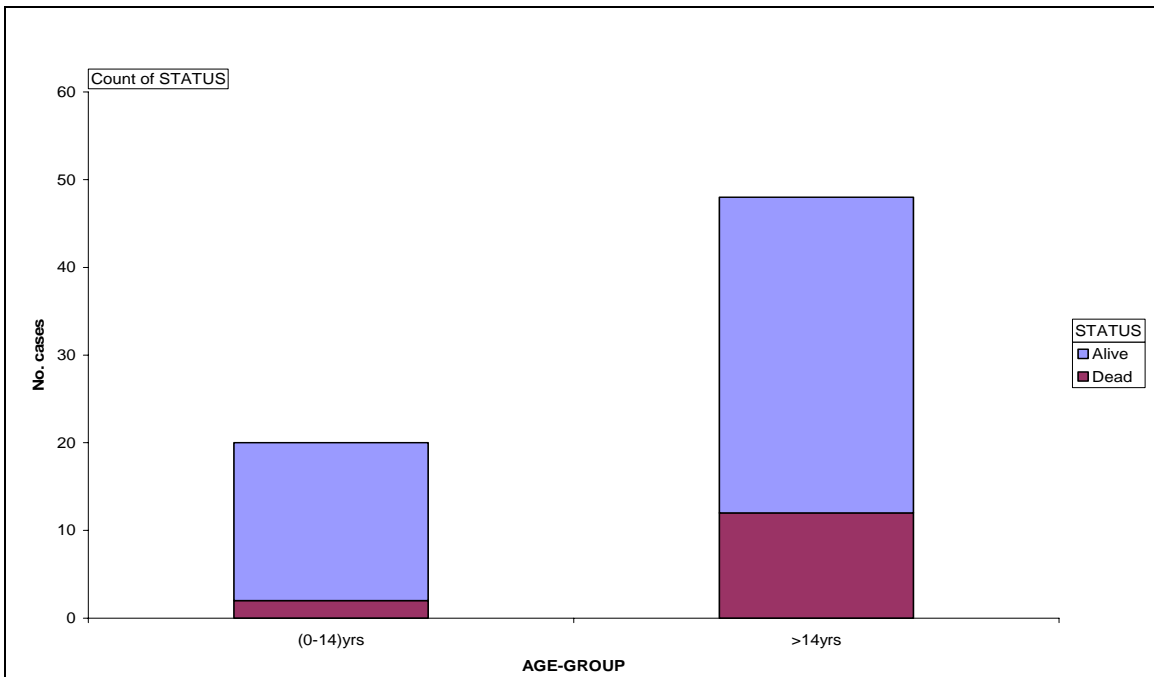
Cases were predominantly identified among persons >14 years for the first three weeks of the outbreak. Children (5-14) years were only significantly affected in week 49.



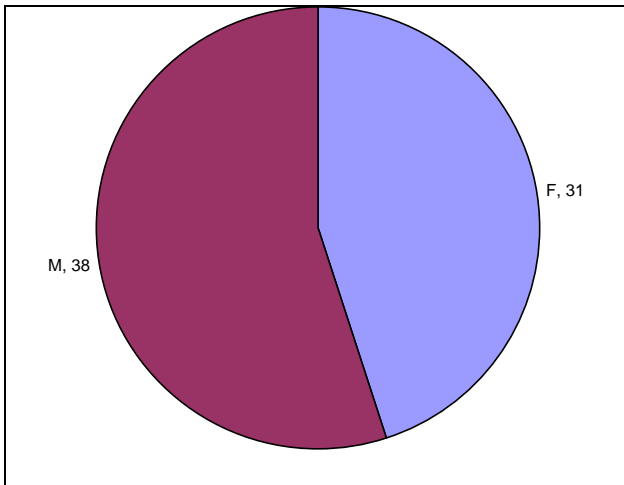
Most of the cases were 14 years and above for all the weeks during the outbreak.



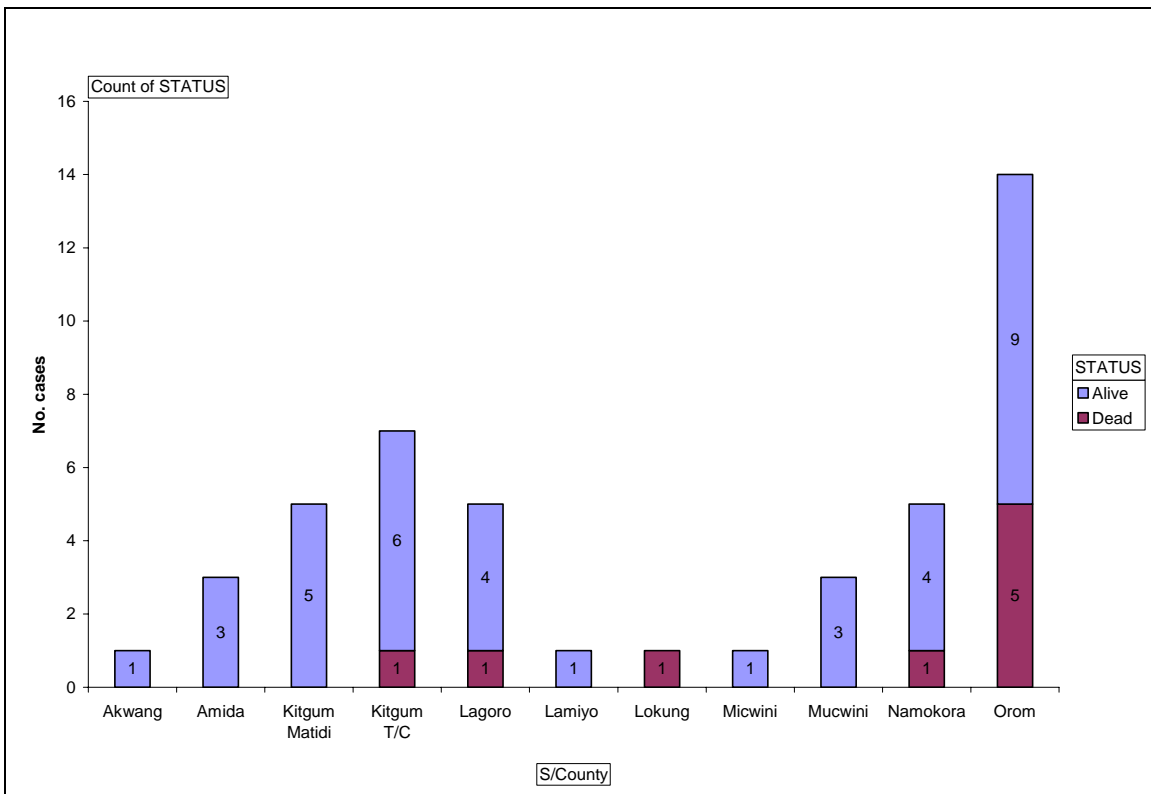
Cases were reported among persons aged (5-14) years; (15-29) years and those above 44 years.



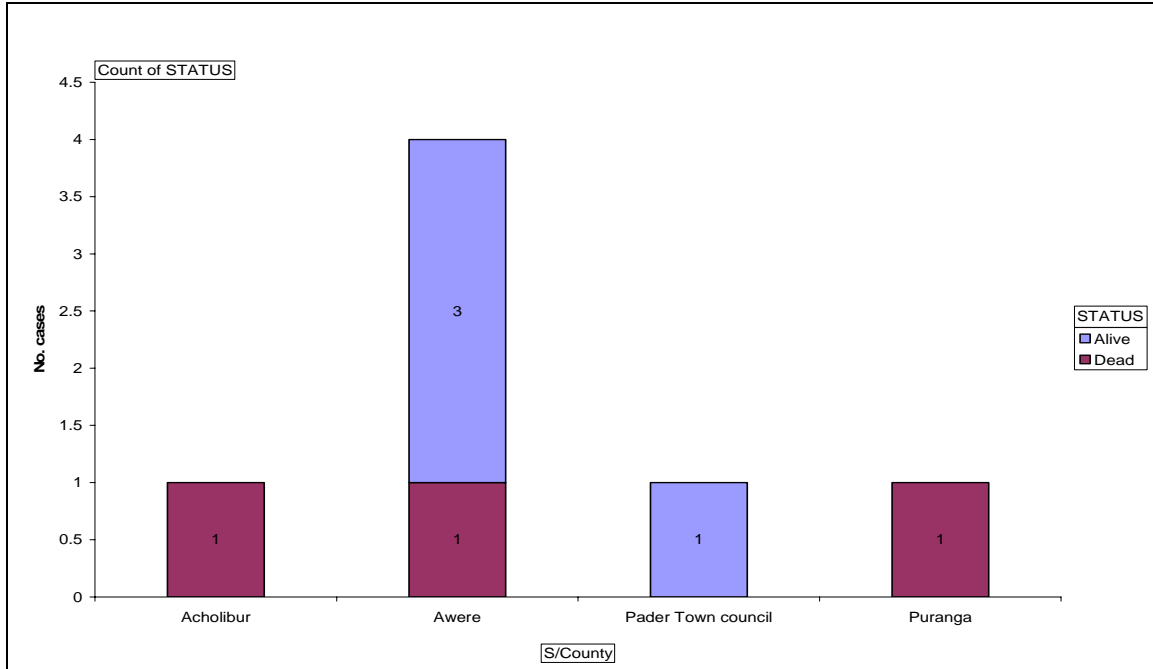
Most cases in Kitgum were >14 years.



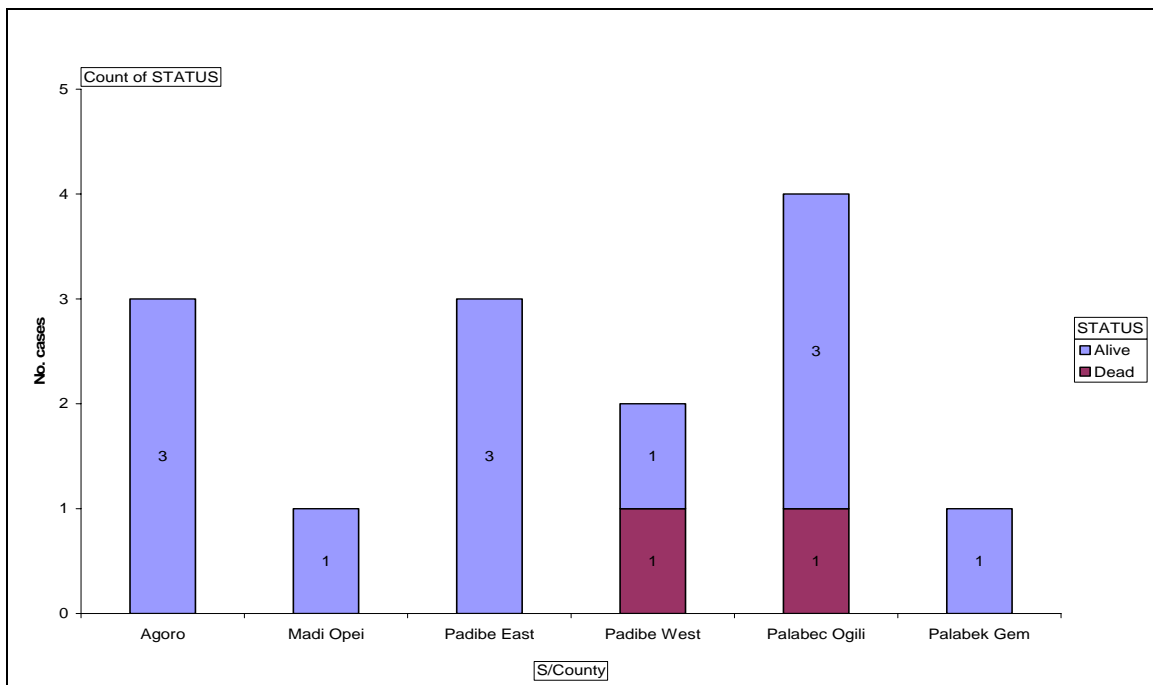
There were more cases among the males.



Most cases in Kitgum were clustered in Orom, and Kitgum Town council.



In Pader, cases were seen from Awere, Acholibur, Pader Town Council and Puranga sub-county.



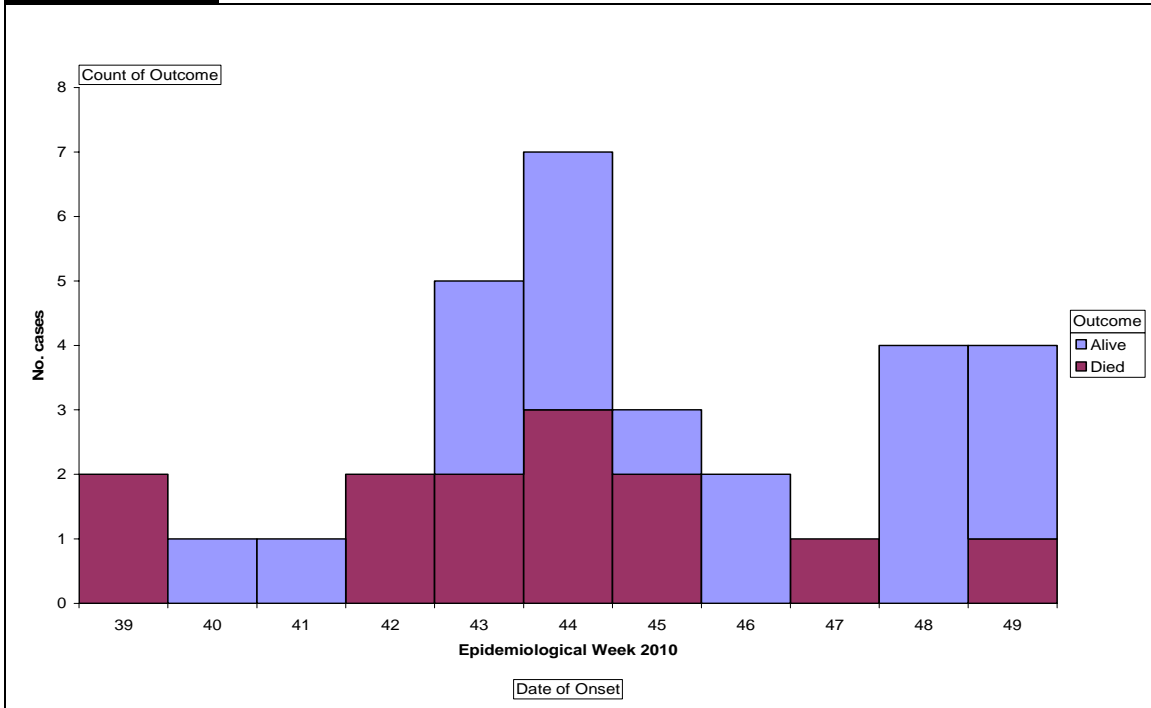
In Lamwo district, cases were reported from Palabek Ogili, Agoro nad Padibe East Padibe West, Madi Opei and Palabek Gem sub-counties.

<b>Kitgum</b>	<b>Frequency</b>	<b>Percentage</b>
Abdominal pain	43	82.7
Any bleeding	55	79.7
Headache	41	74.5
Vomiting (watery)	39	70.9
Fever	34	63
Bloody vomit	30	54.5
Bloody diarrhoea	27	54
Cough	23	53.5
Diarrhoea (watery)	26	52
Nose bleeding	15	30
Other bleeding	10	21.3
Jaundice	2	9.1

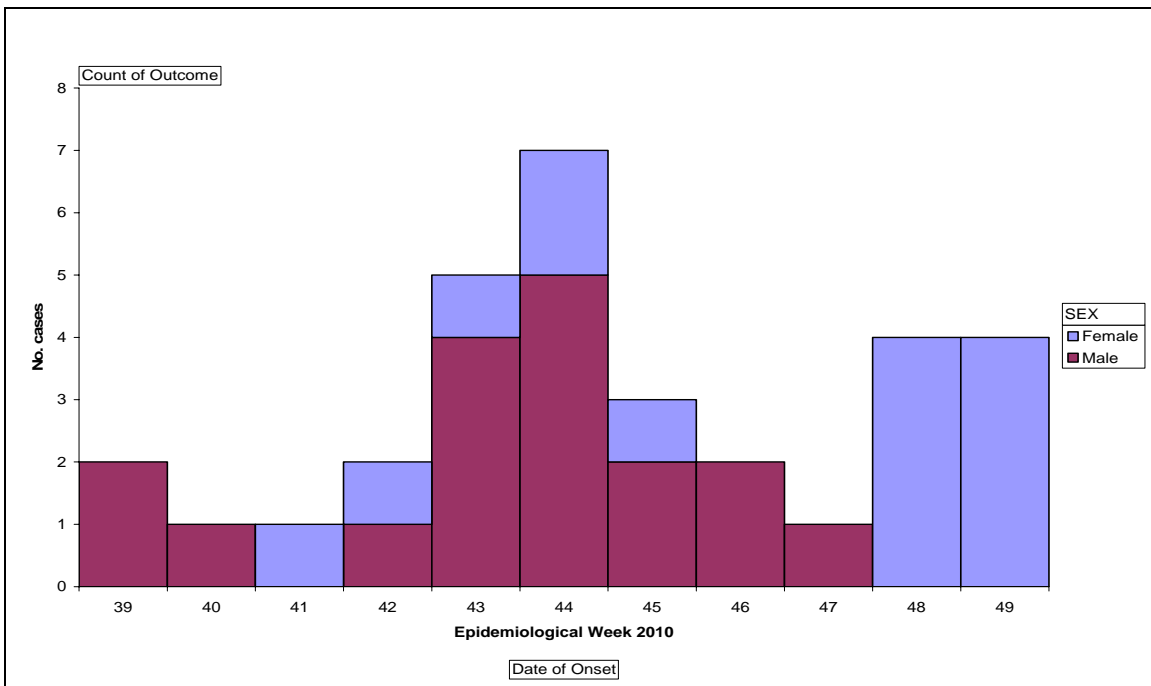
In Kitgum the most prevalent symptoms were abdominal pain, any form of bleeding, vomiting (watery), fever, bloody vomitus and bloody diarrhea.

**Abim**

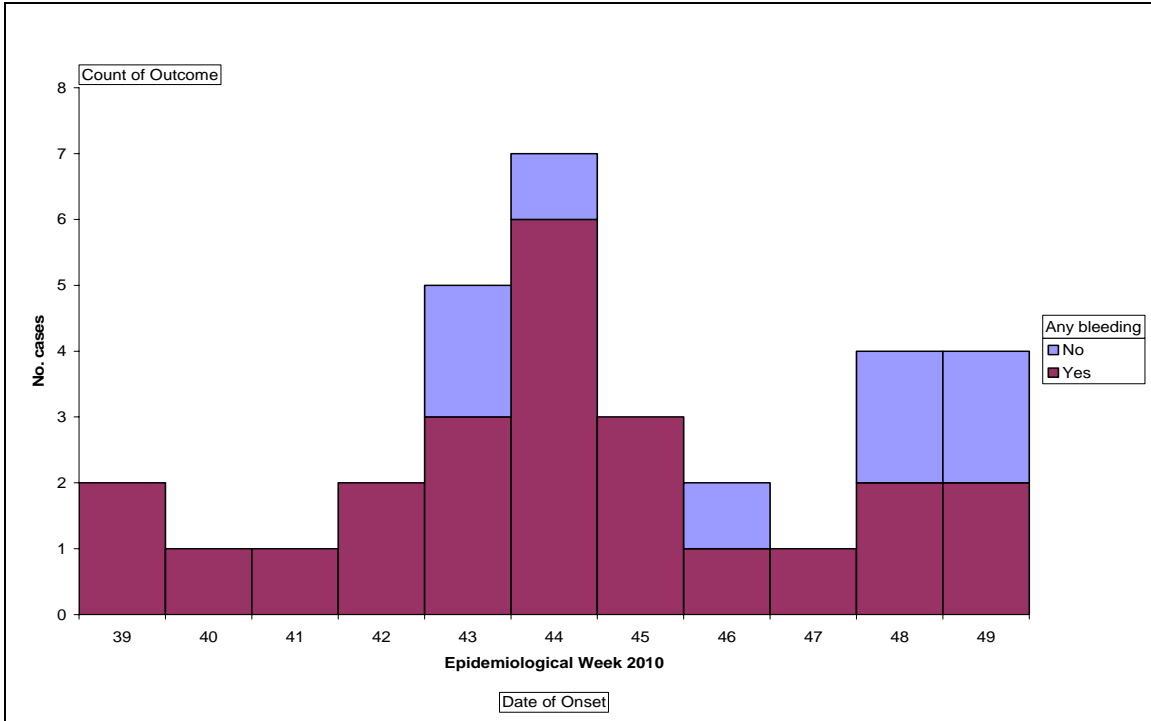
**Epidemic curve**



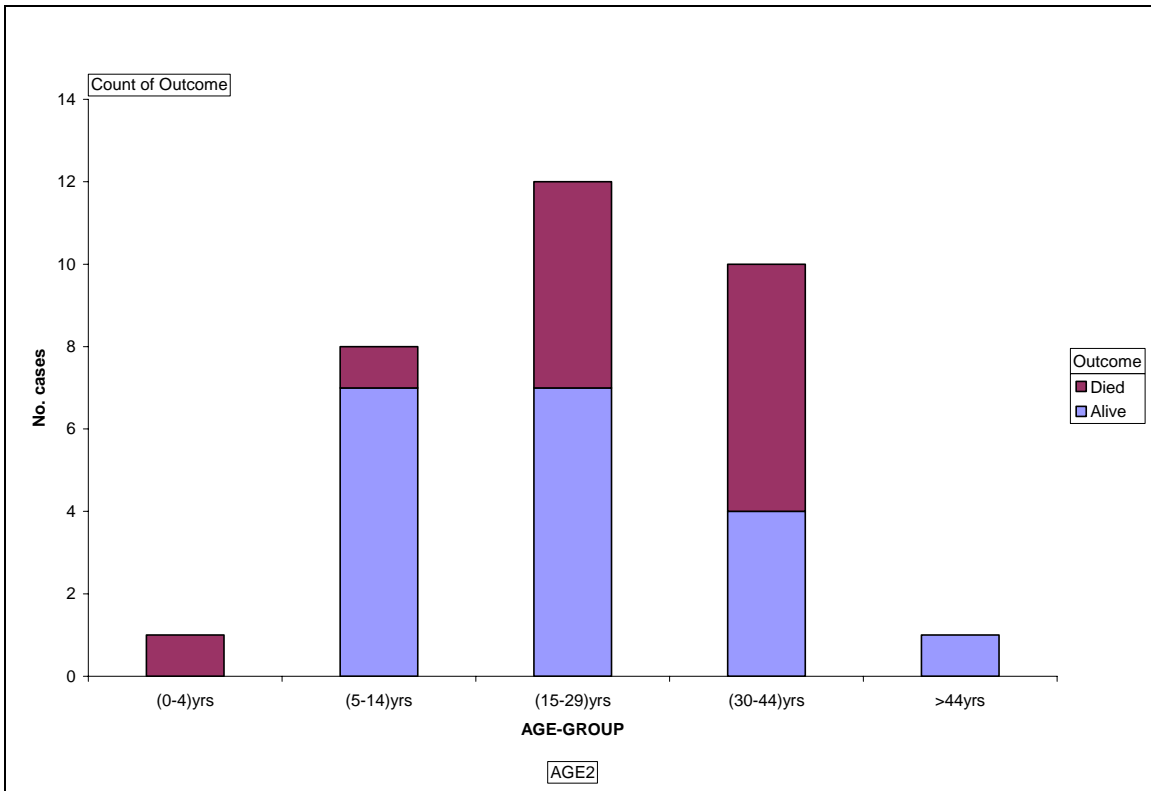
Earliest cases in the region were reported from Abim district in the 39<sup>th</sup> epidemiological week; reaching a peak in week 44.



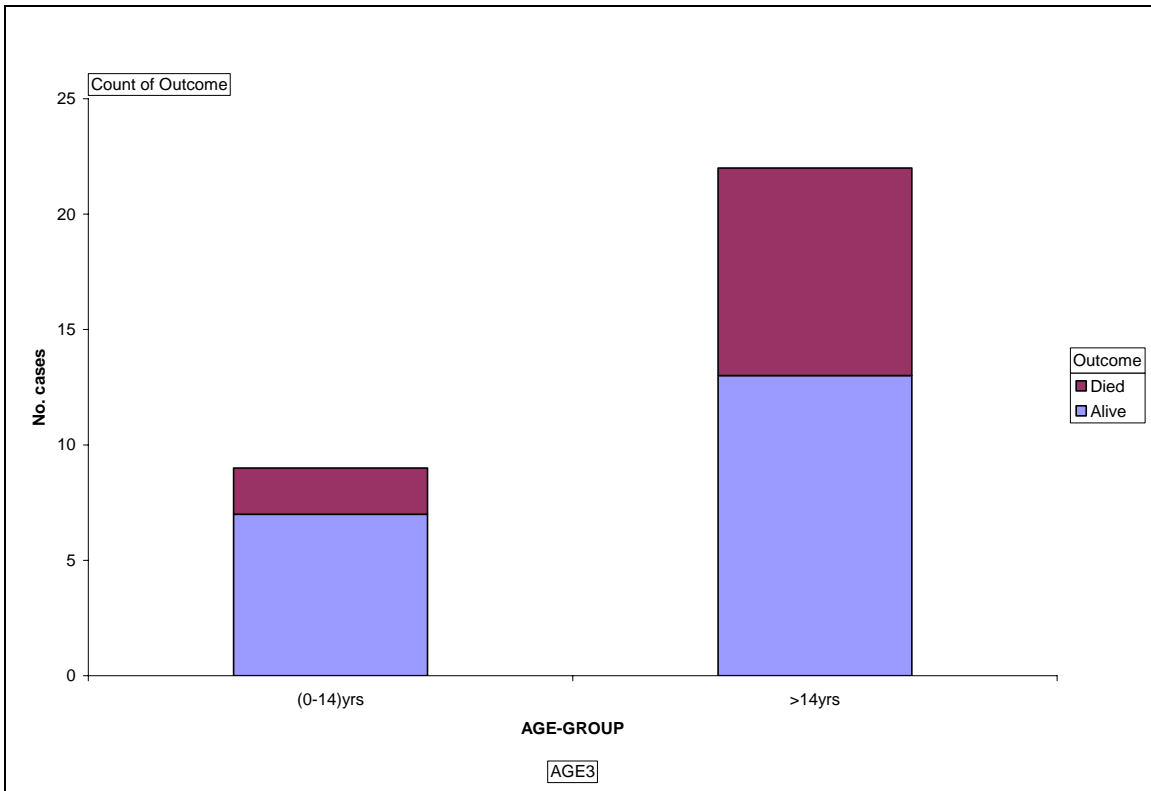
Most of the cases were predominantly males for all the weeks apart from the last two weeks.



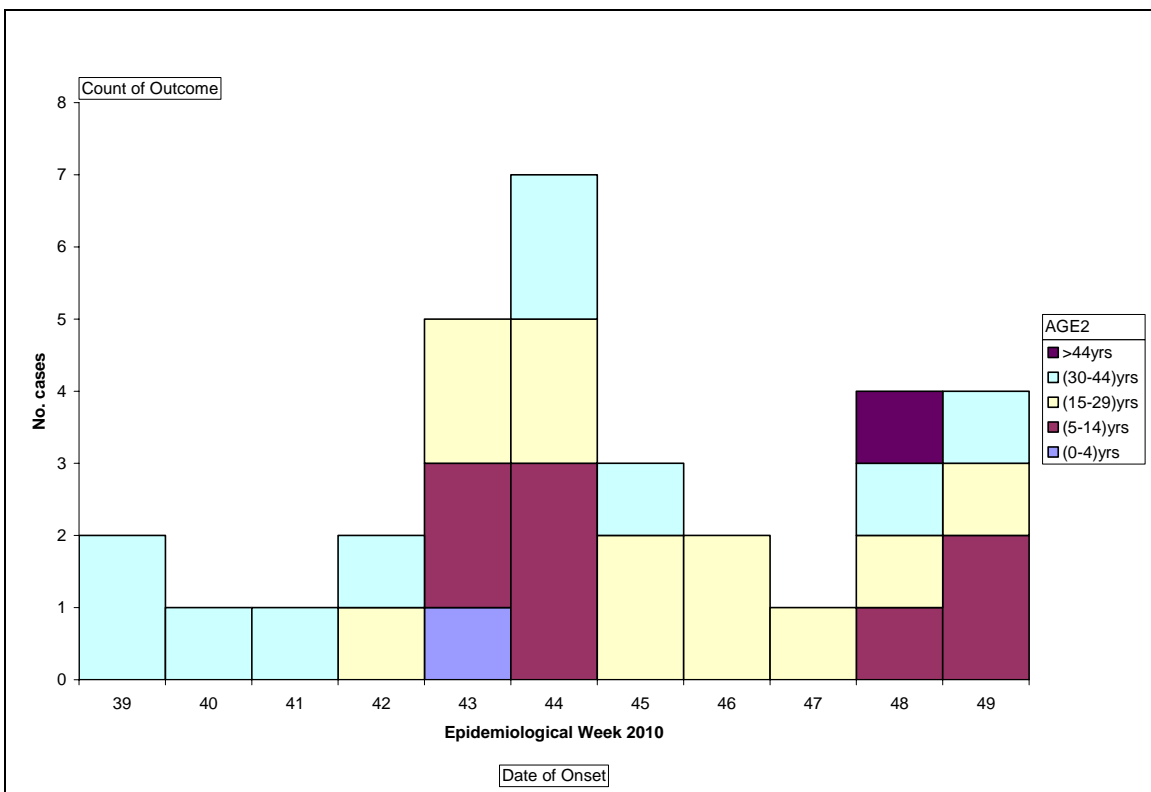
The majority of the patients presented with some form of bleeding during all the weeks.



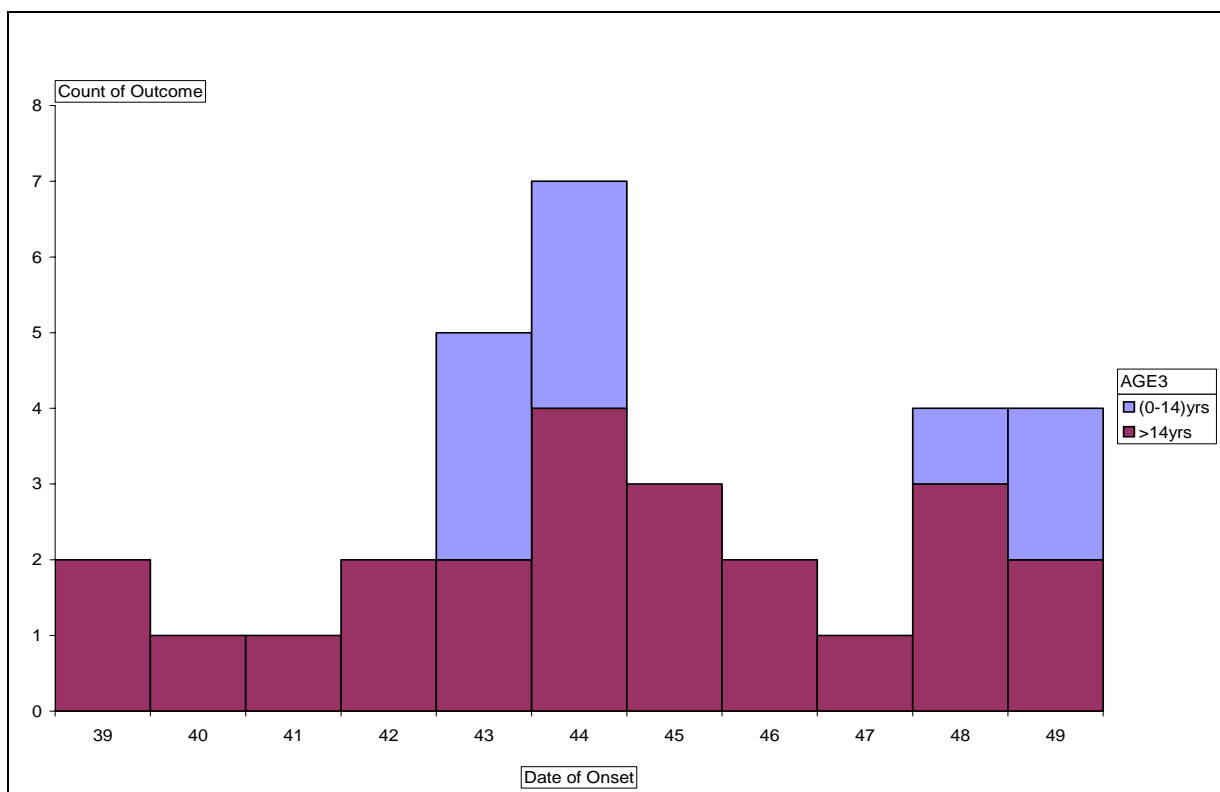
The majority of the patients were 15-44 years.



Most of the patients were >14 years.



Most patients during the first four weeks of the outbreaks were more than 30 years of age.



Most of the patients were >14years for all the weeks.

Abim	Frequency	Percentage
Abdominal pain	28	87.5
Fever	27	84.4
Any bleeding	24	75
Headache	23	71.9
General weakness	15	46.9
Nose bleeding	14	43.8
Diarrhoea	12	37.5
Bloody diarrhoea	9	28.1
Other bleeding	5	15.6
Jaundice	4	12.5
Hematuria	3	9.4
Convulsions	2	6.3

The most prevalent symptoms were abdominal pain, fever, any form of bleeding, head ache, and general body weakness.